



# Little Leaders KLERKSDORP

From Babies  
to Grade R



8 Donald St, Elandia, Klerksdorp  
[financeslittleleaders@gmail.com](mailto:financeslittleleaders@gmail.com)  
Contact: 084 250 0621 | 082 555 4293  
[www.littleleaders.co.za](http://www.littleleaders.co.za)

Don't hesitate to contact  
us for any further information



NURTURING OUR FUTURE LEADERS

# We Focus on



**Child Uniqueness:** We understand the child is an individual, unique learner who is capable, confident and resilient.

**Growing Positive Relations:** Little Leaders children learn to grow an independent, positive relation from a loving base and secure relationship with parent and teacher.

**Learning and Development:** All individuals learn at different levels and at a different pace, all our developmental areas are equally important and are interconnected.

**Environmental Factors:** The playground is our learn through play development x-factor and stimulates the important senses.



**Early Childhood Development Areas:** Our preschool curriculum is designed with early learning and development areas (ELDA's) and we follow the national framework CAPS.

## Physical Development:

Health and safety  
Gross Motor development  
Fine Motor development

## Performing Arts:

Music and movement

## Communication:

Listen and understand  
Speak and communication  
Interactive Smart Learning

## Creativity:

Daily life and play  
Art Classes  
Creative cooking

## Outdoor Environment:

Trampoline Park  
Modern outdoor play equipment  
Shade netting covered play areas

## The World is our oyster:

Exploring and gaining knowledge  
Inquiry and understanding  
Executive Functioning



## Quick Facts:

Language: Afrikaans and English  
Ages: 4 months to 6 years (Gr R)  
Class size: Controlled class size

School times from Monday - Friday  
Full day: 07:00-17:30  
Early bird drop off: 06:45  
Regretfully no half day fee options



## THE DAILY PROGRAM:

- Morning Ring
- Theme Introduction
- Creativity Activity
- Music/Computer Class
- Free Play
- Movement Development
- Story Time
- Nap Time
- Perceptual & Sensory Play



# Extramural Activities

Offered by private tutors/teachers/coaches  
held on Little Leaders premises include:



## Dance & Movement class



Get active

## Gymbaroo



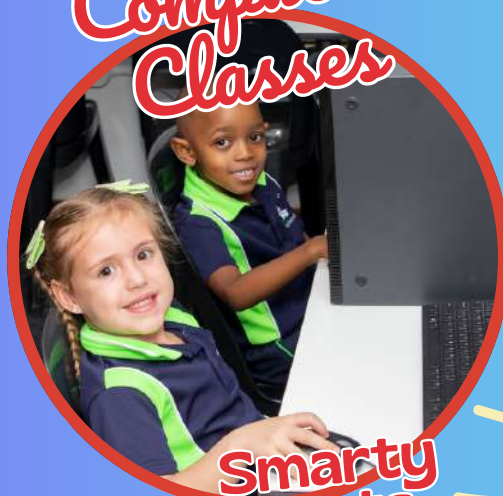
LET'S HAVE FUN

## Extramural Swimming



Spish Splash

## Computer Classes



Smarty Pants

## Princess Curriculum



Little Ladies!

## Lego Education



# Week 1

## MONDAY

Breakfast: Oats served with butter and sugar  
Lunch: Mince with mixed veggies on a bed of rice

## TUESDAY

Breakfast: maize meal with sugar and butter  
Lunch: macaroni served with bolognaise sauce

## WEDNESDAY

Breakfast: maltabella porridge served with butter and sugar  
Lunch: golden chicken nuggets served with french fries

## THURSDAY

Breakfast: cereal served with full cream milk  
Lunch: scrambled eggs served with white toast with tomato sauce

## FRIDAY

Breakfast: oats served with butter and sugar  
Lunch: Junky Friday hotdog

# Kids Menu

Afternoon snack:  
15h00 Alternate servings

+jam sandwiches  
+peanut butter & syrup sandwiches  
+seasonal fruits  
+biscuits  
+crisps



# Week 2

## MONDAY

Breakfast: Oats served with butter and sugar  
Lunch: Spaghetti Bolognaise

## TUESDAY

Breakfast: maize meal with sugar and butter  
Lunch: Chicken served with rice and gravy

## WEDNESDAY

Breakfast: Scrambled eggs with white toast  
Lunch: mince with mixed veggies on a bed of rice

## THURSDAY

Breakfast: cereal served with full cream milk  
Lunch: golden chicken/fish nuggets served with French fries

## FRIDAY

Breakfast: oats served with butter and sugar  
Lunch: junky Friday Boerewors Rolls



Pre School

NURTURING OUR FUTURE LEADERS



# Baby Land!

**GENTLE, LOVING AND EXPERIENCED BABY CARE**

**Welcome to Little Leaders  
Baby Land, where we prioritise  
your child's holistic development,  
ensuring they reach their  
milestones in a nurturing and  
safe environment.**



**Focused on Holistic  
Development**



**Modern Classes  
Camera Systems  
Baby Stimulation  
Monthly Milestone  
Tummy Time  
Music & Outside Play**

**Afrikaans & English  
4-18 Months**



# School fees

Please find below the information regarding your child's enrolment for Little Leaders 2026 and the associated fees. The fee structure for 2026 is as follows:

## NON-REFUNDABLE ENROLMENT FEE PAYABLE ON REGISTRATION OF APPLICATION

Admin & Registration fee (once - off) for Current Students R 700.00 Due BEFORE 30 NOVEMBER	(Includes School Communication book fees for the year- Non refundable Applicable 1-2 years - 4-5 years)
Admin & Registration fee (once - off) New Students R 1000.00 Due BEFORE 30 NOVEMBER	(Includes School T-shirt, School Communication book, Dancemouse joining fee for the year, computer classes & book fees for the year) - Non refundable Applicable 1-2 years - 4-5 years
Babyland only admin & registration fee (once-off) R 1000.00 Due BEFORE 30 NOVEMBER	Includes Communication app, Baby blanket or burp-cloth or diaper bag depending on availability

## SCHOOL FEES PAYABLE OVER 12 Months

Grade/ Age	Monthly Fee January - December	Total for the year	Annual Payment Payable before 31 January 2026
Babaland	R2 270.00	R27 240.00	R25 878.00
1-2	R2 270.00	R27 240.00	R25 878.00
2-3	R2 200.00	R26 400.00	R25 080.00
3-4	R2 150.00	R25 800.00	R24 510.00
4-5	R2 150.00	R25 800.00	R24 510.00
Grade R Full Day	R2 150.00	R25 800.00	R24 510.00
Grade R Half Day	R2 000.00	R24 000.00	R22 800.00

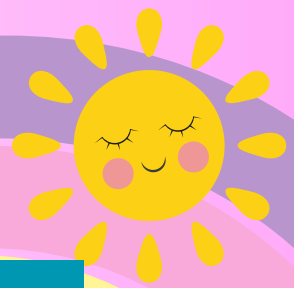
## OTHER FEES

Service	Fee	Optional/Compulsory
Swim (Aqua Swim School) Extra Mural	To be Confirmed	Optional

If you are new to Little Leaders a non-refundable registration fee is payable to secure your 2026 place. Should you cancel after 30 November 2025, a full month's notice fee will be charged.



# Monthly Necessities



## Class 1-2 & 2-3 Years:

2 x 1 liter long life milk  
2 x pack Wet wipes  
1 x 750ml Dettol/Savlon

## Class 3-4 Years:

2 x 1 liter long life milk  
1 x Pack Wet wipes  
1 x Hand sanitizer  
1 x Box tissues

## Class 4-5 Years:

2 x 1 liter long life milk  
1 x pack Wet wipes  
1 x box tissues  
1 x Liquid Hand Soap

## Grade R:

2 x 1 liter long life milk  
1 x Box Tissues  
1 x pack wet wipes  
1 x Hand sanitizer

## Payment methods 2026

Method 1	Annual payment in advance, due by 31 January 2026.
Method 2	Internet payments, due monthly in advance on or before the 7th day of each month x 12months.
Method 3	Cash payment by teacher before the 7th day of each month x 12 months

## Bank details

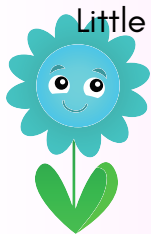
Name of account: Little Leaders  
Bank: FNB- Cheque account  
Account number: 62513228545  
Branche code: 250053

All payment references must be according to allocated reference code provided after enrolment

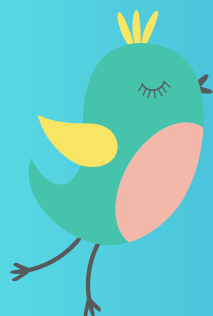
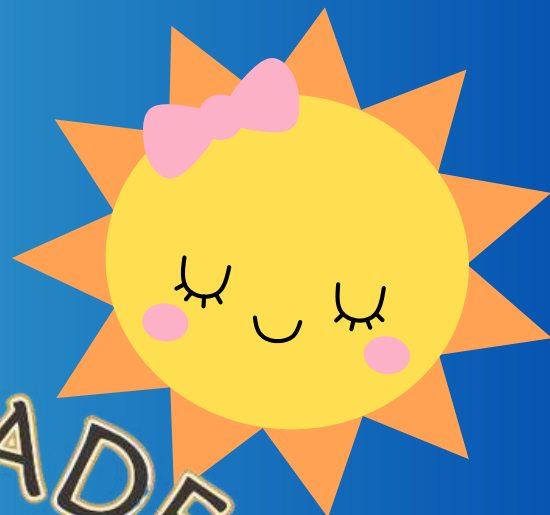
Should you be uncertain about anything in this letter, please contact the school by email at - [financeslittleleaders@gmail.com](mailto:financeslittleleaders@gmail.com)

We thank you for your continued support and for selecting Little Leaders as your school of choice. We look forward to welcoming you and your child/children to the school. We believe that 2026 will be a successful school year for us all.

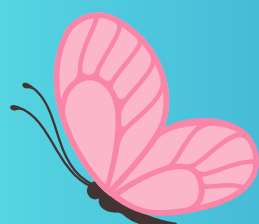
Kind regards  
Little Leaders Klerksdorp







# LITTLE LEADERS



## Pre School

NURTURING OUR FUTURE LEADERS

