



**Little Leaders  
Exclusive**

**ALLEN'S NEK**

**From Babies  
to Grade R**

**Address: 1010 Koshuis str.  
Allen's Nek, Roodepoort  
Contact Joey Botha: 072 202 1625  
littleleadersallensnek@gmail.com  
www.littleleaders.co.za**



**Don't hesitate to contact  
us for any further information**





# We Focus on



## Child Uniqueness:

We understand the child is an individual, unique learner who is capable, confident and resilient.

## Growing Positive Relations:

Little Leaders children learn to grow an independent, positive relation from a loving base and secure relationship with parent and teacher.

## Learning and Development:

All individuals learn at different levels and at a different pace, all our developmental areas are equally important and are interconnected.

## Environmental Factors:

The playground is our learn through play development x-factor and stimulates the important senses.



**Early Childhood Development Areas:** Our preschool curriculum is designed with early learning and development areas (ELDA's) and we follow the national framework CAPS.

## **Physical Development:**

Health and safety  
Gross Motor development  
Fine Motor development

## **Performing Arts:**

Music and movement  
Acro-Fusion  
Gym

## **Communication:**

Listen and understand  
Speak and communication  
Interactive Smart Learning

## **Outdoor Environment:**

Trampoline Park  
Modern outdoor play equipment  
Shade netting covered play areas

## **Creativity:**

Daily life and play  
Art Classes  
Little Chef creative cooking

## **The World is our oyster:**

Exploring and gaining knowledge  
Inquiry and understanding  
Executive Functioning



## **Fun Facts:**

Language: Afrikaans and English  
Ages: 3 months to 6 years  
Class size: Controlled class size

School times from Monday - Friday

Full day: 08:00-17:30

Half day: 08:00-14:00

Early drop off: 06:30

**WE ARE CLOSED IN DECEMBER FOR 3 WEEKS**

## **THE DAILY PROGRAM:**

- Morning Ring
- Theme Introduction
- Creativity Activity
- Free Play
- Movement Development
- Story Time
- Nap Time
- Perceptual & Sensory Play
- Performing Arts



# Extramural Activities

Offered by private tutors/teachers/coaches  
held on Little Leaders Exclusive premises include:



## Acro-Fusion



Stretch and dance

## Gymbaroo



LET'S HAVE FUN

## Tablet classes



TAP, SWIPE,  
WIPE

## Little Chef classes



Yum, Yum,  
Yum!

## Princess Curriculum



Little  
Ladies!

## Mini Gym



Fit & Fabulous

## Sportnetics



Slam  
Dunk!



## Week 1

### MONDAY

Breakfast: Yoghurt & wholewheat toast  
Lunch: Macaroni and a dash of cheese  
Snack: Mixed sandwiches and crisps

### TUESDAY

Breakfast: Oats with a hint of honey  
Lunch: Curry and Rice  
Snack: Biscuits and Fruit

### WEDNESDAY

Breakfast: Scrambled eggs & toast  
Lunch: Sausage and mash with gravy  
Snack: Frozen yoghurt and fruit

### THURSDAY

Breakfast: Maize porridge with butter and sugar  
Lunch: Cocktail sausages and fries  
Snack: Mixed sandwiches and crisps



### FRIDAY

Breakfast: French toast with butter and syrup  
Lunch: Burgers  
Snack: Jelly and Fruit



## Week 2

### MONDAY

Breakfast: Yoghurt & wholewheat toast  
Lunch: Spaghetti Bolognaise  
Snack: Mixed sandwiches and crisps

### TUESDAY

Breakfast: Emoji Flapjacks with banana  
Lunch: Chicken breast with rice & veggies  
Snack: Biscuits and Fruit

### WEDNESDAY

Breakfast: Omelette and cheese  
Lunch: Meatballs with rice and vegetables  
Snack: Frozen yoghurt and fruit

### THURSDAY

Breakfast: Maize porridge with butter and sugar  
Lunch: Fish pops & fries  
Snack: Mixed sandwiches and crisps

### FRIDAY

Breakfast: French toast with butter and syrup  
Lunch: Burgers  
Snack: Jelly and Fruit



## Week 3

### MONDAY

Breakfast: Yoghurt & wholewheat toast  
Lunch: Chicken nuggets & fries  
Snack: Mixed sandwiches and crisps

### TUESDAY

Breakfast: Oats with a hint of honey  
Lunch: Curry and Rice  
Snack: Biscuits and Fruit

### WEDNESDAY

Breakfast: Scrambled eggs & toast  
Lunch: Sausage and mash with gravy  
Snack: Frozen yoghurt and fruit

### THURSDAY

Breakfast: Maize porridge with butter and sugar  
Lunch: Cocktail sausages and fries  
Snack: Mixed sandwiches and crisps

### FRIDAY

Breakfast: French toast with butter and syrup  
Lunch: Sausage rolls and spaghetti salad  
Snack: Jelly and Fruit



## Week 4

### MONDAY

Breakfast: Cereal & warm milk  
Lunch: Shoelace sausages and spaghetti with a tomato-based sauce  
Snack: Mixed sandwiches and crisps

### TUESDAY

Breakfast: Emoji Flapjacks with banana  
Lunch: Chicken breast with rice & veggies  
Snack: Biscuits and Fruit

### WEDNESDAY

Breakfast: Omelette and cheese  
Lunch: Meatballs with rice and vegetables  
Snack: Frozen yoghurt and fruit

### THURSDAY

Breakfast: Maize porridge with butter and sugar  
Lunch: Fish fingers & fries  
Snack: Mixed sandwiches and crisps

### FRIDAY

Breakfast: French toast with butter and syrup  
Lunch: Hot dogs  
Snack: Ice cream and wafers





# SCHOOL FEES 2026

Please find below the information regarding your child's enrolment for Little Leaders 2026 and the associated fees. The fee structure for 2026 is as follows:

## NON-REFUNDABLE ENROLMENT FEE PAYABLE ON REGISTRATION OF APPLICATION

Annual Registration ages 3 Months-6 Years	R1100.00
---	----------

All Activities Included

## SCHOOL FEES PAYABLE OVER 12 Months

No Pay No Stay Policy After 1 month Not Paid

## FULL DAY-SCHOOL FEES

Grade/Age	Monthly Fee Jan-Dec	Payable over 10 Months (Feb-Nov)	Total for the year over 10 months	Annual Payment Payable before 31 Jan 2025
Babies	R4 640.00	R5 518.00	R55 180.00	R53 380.00
1-2	R4 640.00	R5 518.00	R55 180.00	R53 380.00
2-3	R4 520.00	R5 374.00	R53 740.00	R51 940.00
3-4	R4 520.00	R5 374.00	R53 740.00	R51 940.00
4-5	R4 520.00	R5 374.00	R53 740.00	R51 940.00
Gr R	R4 520.00	R5 374.00	R53 740.00	R51 940.00

## Half DAY-SCHOOL FEES

Grade/Age	Monthly Fee (Jan-Dec)	Payable over 10 months (Feb-Nov)	Total for the year over 10 months	Annual Payment Payable before 31 Jan 2025
Babies	R4 200.00	R4 990.00	R49 900.00	R48 100.00
1-2	R4 200.00	R4 990.00	R49 900.00	R48 100.00
2-3	R4 100.00	R4 870.00	R48 700.00	R46 900.00
3-4	R4 100.00	R4 870.00	R48 700.00	R46 900.00
4-5	R4 100.00	R4 870.00	R48 700.00	R46 900.00
Gr R	R4 100.00	R4 870.00	R48 700.00	R46 900.00

If you are new to Little Leaders a non-refundable registration fee is payable to secure your 2026 place. Should you cancel after 30 November 2025, a full month's notice fee will be charged.

The clothing form can be found on page 6



# Monthly Necessities



## BABY:

1 X 750ML DETTOL  
1 X NAPPY BAGS (ONCE-OFF)  
2 X PACK WET WIPES

## 1-2 YEARS:

2 X 1 LITER LONG LIFE MILK  
1 X PACK WET WIPES  
1 X NAPPY BAGS (ONCE-OFF)  
1 X 750ML DETTOL

## GRADE R:

2 X 1 LITER LONG LIFE MILK  
1 X BOX TISSUES  
1 X HAND WASH

## 2-3 YEARS:

2 X 1 LITER LONG LIFE MILK  
1 X PACK WET WIPES  
1 X NAPPY BAGS (ONCE-OFF)  
1 X BOX TISSUES

## 3-4 YEARS:

2 X 1 LITER LONG LIFE MILK  
1 X PACK WET WIPES  
1 X HAND WASH  
1 X BOX TISSUES

## 4-5 YEARS:

2 X 1 LITER LONG LIFE MILK  
1 X PACK WET WIPES  
1 X 750ML DETTOL  
1 X BOX TISSUES

**Monthly option:** For an additional R170 per month, the school will buy the necessities. You can notify us if this option should be added to your account.

## Payment methods

Method 1	Annual payment in advance, due by 31 January 2026.
Method 2	Internet payments, due monthly in advance on or before the 5th day of each month x 12months.
Method 3	Cash payment by teacher before the 5th day of each month x 12 months
Method 4	Payable over 10 months (February to November)

## Bank details

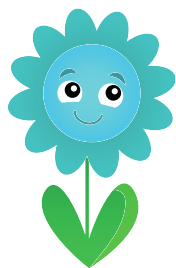
Name of account: Jayrason (PTY) Ltd t/a Little Leaders  
Allen's Nek  
Bank: FNB  
Account number: 62907809927  
Branche code: 210835

All payment references must be according to allocated reference code provided after enrolment

Should you be uncertain about anything in this letter, please contact the school by email at - [littleleadersallensnek@gmail.com](mailto:littleleadersallensnek@gmail.com) or contact **Joey: 072 202 1625**

We thank you for your continued support and for selecting Little Leaders as your school of choice. We look forward to welcoming you and your child/children to the school. We believe 2026 will be a successful school year for us all.

Kind regards  
**Joey Botha**  
Principal of Little Leaders Exclusive  
Allen's Nek







# CLOTHING ORDER FORM



Name of learner: \_\_\_\_\_

Class/Age Group: \_\_\_\_\_

Contact Number: \_\_\_\_\_

Description	Unit Price	Size	Quantity	Amount
School T-Shirt	R205.00			
School Short	R195.00			
Tracksuit Pants	R275.00			
School Dry-mac with fleece	R315.00			
Acro-Fashion Outfit Brabded Unitard-Unisex	R305.00			
TOTAL:				

*T-Shirt*



*Drymac*



*Short*



*Tracksuit  
Pants*



*Acrobatic  
Outfit*



If you have previously ordered and paid for a uniform, and have not received it please specify.

Date Paid:		Amount Paid:	

Signature of parent \_\_\_\_\_

Date \_\_\_\_\_



